

Home About us Products Solutions Contacts Quality HS&E In the News Guestbook Links

LaurelSteel
A DIVISION OF HARRIS STEEL LIMITED

MATERIAL SAFETY DATA SHEET

SECTION 1 – MATERIAL IDENTIFICATION AND USE

Material Name : FREE MACHINING CARBON STEEL
 Chemical Family: Steel
 Material Use: Production of Steel Products
 Chemical Formula and Molecular Weight: not applicable
 Chemical Name, Trade Names and Synonyms: not applicable

SECTION 2 – HAZARDOUS INGREDIENTS OF MATERIAL

*NOTE: concentrations represent a maximum for all grades and must not be interpreted as a specification for a particular grade.

COATINGS: Material may be oiled, lime coated, or galvanized.

SECTION 3 – PHYSICAL DATA FOR STEEL

Physical State and Appearance: Solid material. Silver or grey metallic
 Specific Gravity: 7.6-7.8.
 Melting Point: Material melts at 1530oC
 Vapour Pressure and Density: not applicable
 Evaporation Rate and Boiling Point: not applicable
 % Volatiles and Odour Threshold: not applicable
 Solubility in Water and pH: not applicable.

SECTION 4 – FIRE AND EXPLOSION HAZARDS

Flammability : not flammable
 Means of Extinction or Special Procedures: not applicable
 Auto Ignition Temperature and Rate of Burning: not applicable
 Flash Point and Upper/Lower Explosion Limits: not applicable
 Sensitivity to Chemical Impact and Static Discharge: not applicable
 Hazardous Combustion Products: not applicable
 NOTE: Thermal degradation of coatings may release irritating hydrocarbons

SECTION 5 – REACTIVITY DATA

Chemically Stable: Yes

Incompatibility with other Substances: not applicable

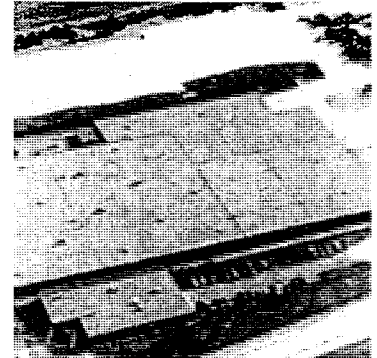
Reactivity and Conditions: contact with mineral acids will release hydrogen gas.

Hazardous Decomposition Products: Welding or cutting will generate fume.

SECTION 6 – TOXICOLOGICAL INFORMATION

Effects of Acute Exposure to Products:Welding or cutting will generate fumes. Inhalation overexposure to fume may cause a flu-like condition (e.g. chills, nausea) called metal fume fever.

Effects of Chronic Exposure to Products:Welding or cutting will generate metal fume and dust. Prolonged inhalation overexposure to dust or fume may result in conditions such as Siderosis with few or no symptoms (Siderosis is an accumulation of iron oxide in the lungs). Lead poisoning may result from



About Us

Products

Solutions

Contacts

Quality

HS&E

Certificate of
Registration

MSDS – Free Machining
Carbon Steel

MSDS – Carbon Steel

Policy Statement

Awards

12T14 Cutter's Choice
Green

Careers

In the News

Guestbook

Links

chronic exposure to fumes.

Skin contact with coating materials may cause skin irritation and/or dermatitis with prolonged contact.

Sensitization to Product: no known effects

Synergistic Materials: no known effects

Mutagenic, Teratogenic, or Reproductive Effects: no known effects

SECTION 7 – PREVENTIVE MEASURES

Personal Protective equipment:

Personal protective equipment required is dependent on the process being performed on the material (e.g. burning or cutting). Each operation must be addressed for suitable personal protective equipment.

Gloves: recommended for prolonged contact. Barrier creams may be used when handling oily steel.

Glasses and footwear: to be worn as required or as appropriate.

Respirators: NIOSH approved respiratory protection as appropriate.

Engineering Controls: use appropriate ventilation (general or local) when welding, cutting or grinding.

SECTION 8 – FIRST AID

Skin: wash affected area with soap and water. Seek medical attention if irritation persists.

Eyes: Flush eyes with plenty of water while holding eyelids open. Seek medical attention if irritation persists.

Inhalation: For overexposure to metal fumes, remove to fresh air. Seek medical attention for adverse symptoms.

Ingestion: not applicable

SECTION 9 – PREPARATION DATA

Prepared by: Sandro DeSordi, Quality Assurance Manager

Telephone: 1-905-681-6811

MSDS date: 13 January 2004



©2002 by Laurel Steel & Tri-Media Integrated Marketing Technologies

[Phone : 1-800-265-6811 | Contact Information]

ISO 9002 Registered

QS 9000 Registered



Carbon Steel Safety Data



MATERIAL SAFETY DATA SHEET

Laurel Steel
5400 Harvester Road
P.O. Box 5095
Burlington, Ontario
Canada L7R 3Y8

Telephone 905-681-6811
Fax 905- 634-7888

SECTION 1 - MATERIAL IDENTIFICATION AND USE

Material Name : CARBON STEEL

Chemical Family: Steel

Material Use: Production of Steel Products (including mesh, wire and bar products)

Chemical Formula and Molecular Weight: not applicable

Chemical Name, Trade Names and Synonyms: not applicable

SECTION 2 - HAZARDOUS INGREDIENTS OF MATERIAL

ELEMENT	MAXIMUM*	PEL as fume (mg/m3)
Carbon	1.00	3.5
Manganese	2.20	5.0
Phosphorus	2.25	0.1
Sulphur	0.50	n/a
Lead	n/a	0.05
Silicon	n/a	5.0
Iron	balance	10.0

***NOTE:** concentrations represent a maximum for all grades and must not be interpreted as a specification for a particular grade.

COATINGS: Material may be oiled, lime coated, or galvanized

SECTION 3 - PHYSICAL DATA FOR STEEL

Physical State and Appearance: Solid material. Silver or grey metallic

Specific Gravity: 7.6-7.8.

Melting Point: Material melts at 1530oC

Vapour Pressure and Density: not applicable

Evaporation Rate and Boiling Point: not applicable

% Volatiles and Odour Threshold: not applicable

Solubility in Water and pH: not applicable

SECTION 4 - FIRE AND EXPLOSION HAZARDS

Flammability : not flammable

Means of Extinction or Special Procedures: not applicable

Auto Ignition Temperature and Rate of Burning: not applicable

Flash Point and Upper/Lower Explosion Limits: not applicable

About Us

Products

Solutions

Contacts

Quality

HS&E

Certificate of Registration

MSDS - Free Machining Carbon Steel

MSDS - Carbon Steel Policy Statement

Awards

12T14 Cutter's Choice Green

Careers

In the News

Guestbook

Links

Sensitivity to Chemical Impact and Static Discharge: not applicable
 Hazardous Combustion Products: not applicable

NOTE: Thermal degradation of coatings may release irritating hydrocarbons

SECTION 4 - REACTIVITY DATA

Chemically Stable: Yes
 Incompatibility with other Substances: not applicable
 Reactivity and Conditions: contact with mineral acids will release hydrogen gas.
 Hazardous Decomposition Products: Welding or cutting will generate fume.

SECTION 5 - TOXICOLOGICAL INFORMATION

Effects of Acute Exposure to Products:
 Welding or cutting will generate fumes. Inhalation overexposure to fume may cause a flu-like condition (e.g. chills, nausea) called metal fume fever.

Effects of Chronic Exposure to Products:
 Welding or cutting will generate metal fume and dust. Prolonged inhalation overexposure to dust or fume may result in conditions such as Siderosis with few or no symptoms (Siderosis is an accumulation of iron oxide in the lungs).

Skin contact with coating materials may cause skin irritation and/or dermatitis with prolonged contact.

Sensitization to Product: no known effects
 Synergistic Materials: no known effects
 Mutagenic, Teratogenic, or Reproductive Effects: no known effects

SECTION 7 - PREVENTIVE MEASURES

Personal Protective equipment:
 Personal protective equipment required is dependent on the process being performed on the material (e.g. burning or cutting). Each operation must be addressed for suitable personal protective equipment.

Gloves: recommended for prolonged contact. Barrier creams may be used when handling oily steel.

Glasses and footwear: to be worn as required or as appropriate.

Respirators: NIOSH approved respiratory protection as appropriate.

Engineering Controls: use appropriate ventilation (general or local) when welding, cutting or grinding.

SECTION 8 - FIRST AID

Skin: wash affected area with soap and water. Seek medical attention if irritation persists.

Eyes: Flush eyes with plenty of water while holding eyelids open. Seek medical attention if irritation persists.

Inhalation: For overexposure to metal fumes, remove to fresh air. Seek medical attention for adverse symptoms.

Ingestion: not applicable

SECTION 9 - PREPARATION DATA

Prepared by: Sandro DeSordi, Quality Assurance Manager

Telephone: 1-905-681-6811

MSDS expiry date: 13 January 2007